

LISA KANNING
COLLECTION BY
HARTMANN & FORBES®
DESIGNER COLLABORATION





LISA KANNING

“MY DESIGNS ARE TYPICALLY DRIVEN
BY A LAYERING OF RICH ORGANIC
MATERIALS TO CREATE UNIQUE
TEXTURES WITH VISUAL INTEREST”

Influenced by a rural Montana upbringing, Kanning's love of organic shapes and materials informs her collection for Hartmann&Forbes. Layered window and wall coverings are detailed with intricate patterns that mimic those found in nature while maintaining a sophisticated sensibility that suits a range of settings.



GRASSWEAVE [WTS]

FUNGI

Meticulously hand-placed Mendong flowers distinguish this design. Woven of weighty ramie, individual flowers are inserted into the weft, creating a series of dark slubby streaks that recall the frilly edge of a mushroom cap sprouting from the forest floor.



LELK40-06 Mushroom



WALLCOVERING

MARSH

A desolate field of wizened grass is reimagined as a vibrant landscape in this series. Tonal paper weave is embroidered with dimensional stitches that free and separate the fibers. Its fringed eyelash effect is reminiscent of the graceful movement of grass in a marsh.



WLLK49-18 Fawn



WLLK49-18G Fawn Ground

Window Price Group: 5 | Max Width: 180"
Available Styles: Roman, Top Treatment

Wall Width: 36" (91.4cm) | Length: 8yds (7.39m)

Shown: LELK40-06 Fungi – Mushroom, Old Style Roman
WLLK49-18 Marsh – Fawn, Wallcovering

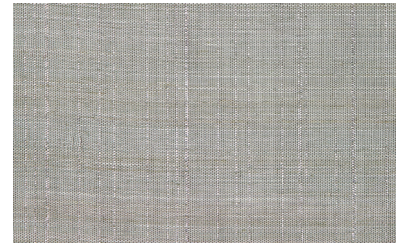
GRASSWEAVE [WTS]

ZENTIH

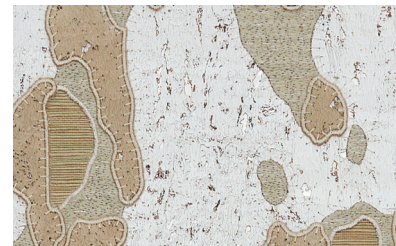
Slender metallic stripes shimmer against a field of sheer banana fiber in this series. The delicate tone-on-tone design is woven with dimensional traces of copper or silver that gracefully descend the fabric, their vertical trajectory evoking a streaking star in the night sky.



LELK44-06 Halcyon



LELK44-60 Vapor



WLLK47-30 Sage



WLLK47-30G Sage Ground

WALLCOVERING

SYCAMORE

Reminiscent of Sycamore tree bark, this series features a captivating camouflage pattern. The mottled motif is rendered in a complex layering of silver-painted paper, laser-cut cork, sisal, and metallic embroidery, the interplay of materials bringing rich depth and organic beauty.

Window Price Group: 5 | Max Width: 180"
Available Styles: Roman, Top Treatment

Wall Width: 36" (91.4cm) | Length: 8yds (7.39m)

Shown: LELK44-60 Zenith – Vapor, Old Style Roman
WLLK47-30 Sycamore – Sage, Wallcovering





WALLCOVERING

BIRCH

Inspired by natural birch bark, this series reinterprets its namesake in a richly textural design. The large-scale, dimensional pattern is elaborately stitched with slate or gold threads that play a delicate counterpoint to a rough-hewn cork ground over metallic paper.



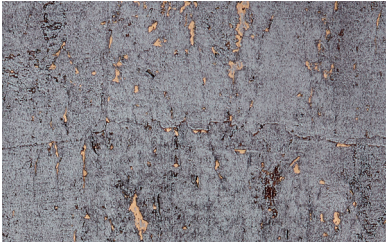
WLLK46-03 Gardenia



WLLK46-34 Wisteria



WLLK46-03G Gardenia Ground



WLLK46-34G Wisteria Ground

Wall Width: 36" (91.4cm) | Length: 8yds (7.39m)

Shown: WLLK46-34 Birch – Wisteria, Wallcovering

888.582.8780 | HARTMANNFORBES.COM



GRASSWEAVE [WTS]

CENOTE

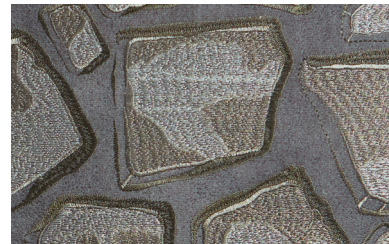
Long, hanging vines suspended over Yucatan sinkholes served as inspiration for this earthy yet elegant series. Refined abaca is woven with gleaming gold, silver, and copper threads, producing textural striations that conjure the rich dimension and natural colors of these underground caves.



LELK41-31 Oro



WLLK48-18 Topaz



WLLK48-60 Pyrite



WLLK48-18G Topaz Ground



WLLK48-60G Pyrite Ground

WALLCOVERING ROCKS

Faux suede intricately stitched in complementary colors creates this collection's trompe l'oeil effect of strewn rocks. Artful tonal shifts produce a play of shadow and angles that lend depth and detail to the pattern, the sheen from the embroidery enhancing its dimensional quality.

Window Price Group: 5 | Max Width: 180"
Available Styles: Roman, Top Treatment

Wall Width: 36" (91.4cm) | Length: 8yds (7.39m)

Shown: LELK41-31 Cenote - Oro, Old Style Roman
WLLK48-18 Rocks - Topaz, Wallcovering

