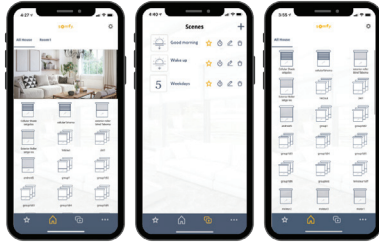




INTEGRATION INTERFACES



TaHoma®



APP, VOICE AND INTEGRATION

TaHoma® is a WiFi bridge that allows you to operate shades while at home or away with a smartphone or tablet. Create custom scenes, schedules and utilize your digital assistant such as Google Assistant and Amazon Alexa.

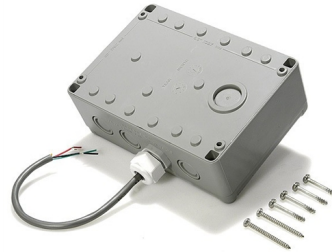
Universal RTS Interface II

A 16 channel interface to converts RS232 & RS485 protocols into RTS commands.



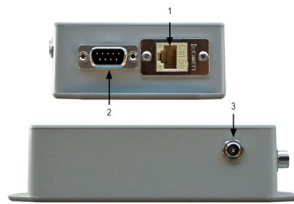
RTS Dry Contact Interface

A single channel device to communicate between home automation or 3rd party systems and RTS motors. Requires three contact closures: stop, up, and down.



Somfy Connect LTI

Allows Lutron®'s hand-held and in-wall controls from RadioRA® 2, HomeWorks® QS, Grafik Eye® QS, and Quantum® systems to operate Somfy RTS and Somfy SDN motorized applications.



ELEMENT	FUNCTION
1	SDN BUS RS485 - Connect to SDN system or URTSI II
2	Integration Port RS232 - Connect to Lutron Integration port
3	Power 3.5mm Barrel connector (female)