



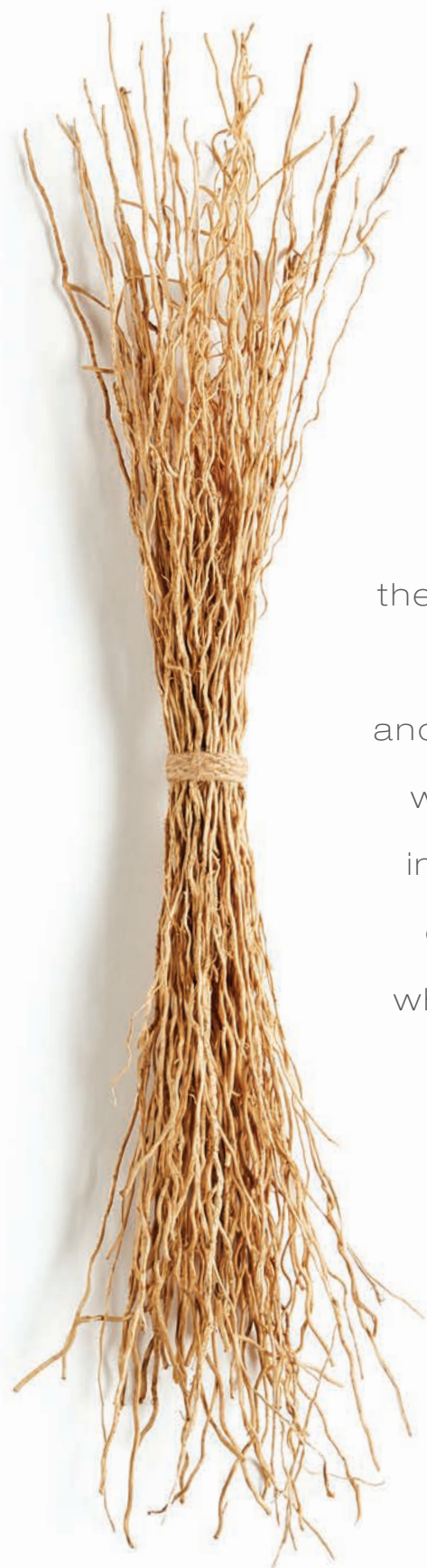
HARTMANN & FORBES

SPRING | SUMMER 2024

THE MUSEUM OF
INDIAN ARTS + CULTURE

MAX HUMPHREY

MICHAEL S. SMITH



Design is
the poetic dance
of culture
and environment,
weaving tales
in every brush
of color and
whisper of form

OUR COLLECTION IS A VIBRANT TAPESTRY, each weave a representation of the diverse cultures and unique narratives from around the world.

This season, we've had the honor of blending ancient stories with modern elegance, collaborating with the esteemed curator of the Museum of Indian Arts and Culture and renowned designers Michael S. Smith and Max Humphrey. Each creation infused with a distinctive design personality, a harmonious blend of the old and the new.

We are deeply grateful for the partnerships and creativity that fuel our journey in helping create sanctuary through natural design. We hope that our versatile and rich collection inspires your own design journey, allowing the manifestation of your art in a myriad of styles.

Yours In Nature,
~ Michael Jones
Founder





MUSEUM OF INDIAN ARTS + CULTURE

Located in Santa Fe, New Mexico, the Museum of Indian Arts and Culture (MIAC) serves as a center of stewardship, knowledge, and understanding of the artistic, cultural, and intellectual achievements of the diverse peoples of the Native Southwest. Hartmann&Forbes was honored to be invited to view the Museum's extensive textile, basketry, and pottery collections and to select four objects from which to reimagine in a range of modern windowcoverings. Each design is jacquard-handloomed and inspired by a different Native craft tradition: basketry, pottery, and weaving. This collaboration with the Museum pays homage to the natural materials and design motifs integral to the Hopi, Yurok, Diné (Navajo), and Pueblo peoples, and it is our hope that these interpretations honor the creative conversations between the maker and the objects.

A portion of
this collection's
proceeds supports
MIAC and its mission.





STARLIGHT

Guided by light

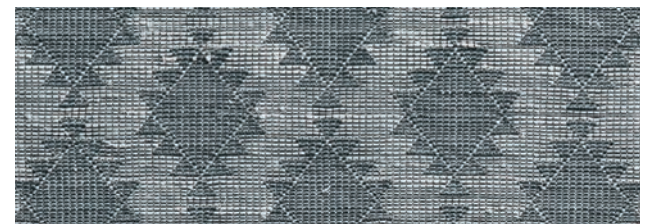
The Starlight series reimagines a turn-of-the-century storage basket from California's Yurok tribe. Handwoven of ramie, the elemental motif evokes the timeless symbolism of a star-filled sky, serving as a guide for explorers and travelers alike.

Woven-to-Size Grassweave
OLD STYLE ROMAN SHADE
LESF90-18 Starlight - Tan

MUSEUM OF INDIAN ARTS + CULTURE
natural woven shades

STORAGE BASKET
CA. 1904

Artist once known
Yurok people of California
Hazelnut rods, spruce root,
beargrass, maidenhair
fern stem



LESF90-55 Turquoise



LESF90-12 Parchment



LESF90-18 Tan



LESF90-36 Silver



LESF90-42 Bronze



SADDLE BLANKET
CA. 1940
Artist once known
Diné (Navajo)
Wool



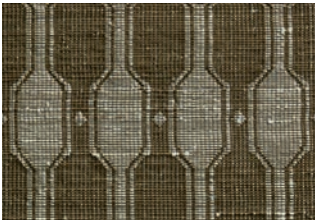
LESF93-18 Tan



LESF93-21 Ochre



LESF93-36 Silver



LESF93-30 Sage

SKY LADDER

Weaving timeless narratives

Inspired by a 1940s Diné (Navajo) wool saddle blanket, Sky Ladder is defined by a series of hexagonal shapes descending in vertical bands with delicate diamonds for artful detail. Handwoven of ramie, its rich texture complements the tone-on-tone beauty, while the ladder-shaped motif symbolizes the rider's journey along rivers and under the cloud-filled sky.



Woven-to-Size Grassweave
OLD STYLE ROMAN SHADE
LESF93-36 Sky Ladder - Silver

WATER LINES

Fluid patterns

Waterlines draws inspiration from a 1977 Pueblo pottery jar designed for carrying water. Handwoven of ramie, its geometric honeycomb pattern in a two-tone palette captures the elegant simplicity of interlocking circles formed when water swirls around river rocks.



Woven-to-Size Grassweave
OLD STYLE ROMAN SHADE
LESF91-87 Waterlines - Onyx

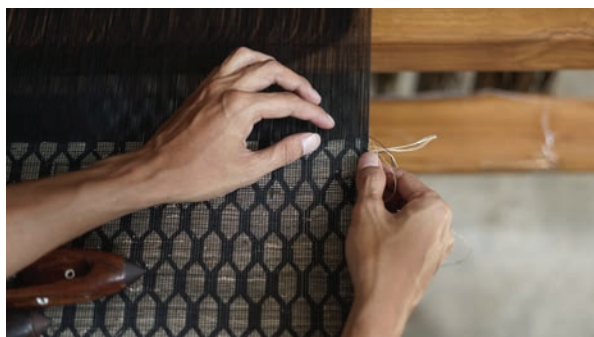
Soft Natural Fabric
BY-THE-YARD
EW151-27 Brushed - Millet

Natural Wallcovering
WL420-45 Harbor - San Juan



POTTERY JAR
CA. 1977

Artist once known
Santo Domingo Pueblo



LESF91-87 Onyx



LESF91-21 Ochre



BOWL
CA. 1960-1968
Ada Fredricks, Hopi
Yucca leaves,
rabbit brush,
and galleta grass



PASSAGES

Conversations
woven through time

A 1960s Hopi woven bowl made of yucca leaves inspired Passages. Ramie is handwoven in a rhythmic rectilinear pattern that draws references to the original conversation between the maker and the basket. The tactile weave softens the crisp geometry while evoking the intricate look of basketry.



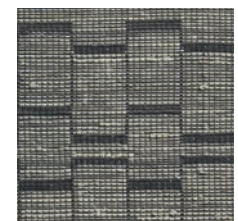
LESF92-09 Chamois



LESF92-42 Bronze



LESF92-21 Ochre



LESF92-84 Graphite

Woven-to-Size Grassweave
TRADITIONAL STYLE ROMAN SHADE
LESF92-21 Passages - Ochre
ROLLER STYLE SHADE
LE5245 Ethereal - Serene



MAX HUMPHREY
natural woven shades

MAX HUMPHREY

New designs
inspired by America's
National Parks



During the creation of his latest book, *Lodge: An Indoorsy Tour of America's National Parks*, Humphrey was inspired by the travel to expand on his collection of handwoven windowcovering designs to include a little rustic charm, a cozy aesthetic, and always a nostalgic twist.

GINGHAM

Checking the boxes

A fresh take on a traditional gingham check is loomed of natural ramie fibers, creating subtle variations in each square that soften the geometric grid and highlight its handcrafted quality.

LEMH500-57 Blue
LEMH500-36 Gray

TREES

Into the forest

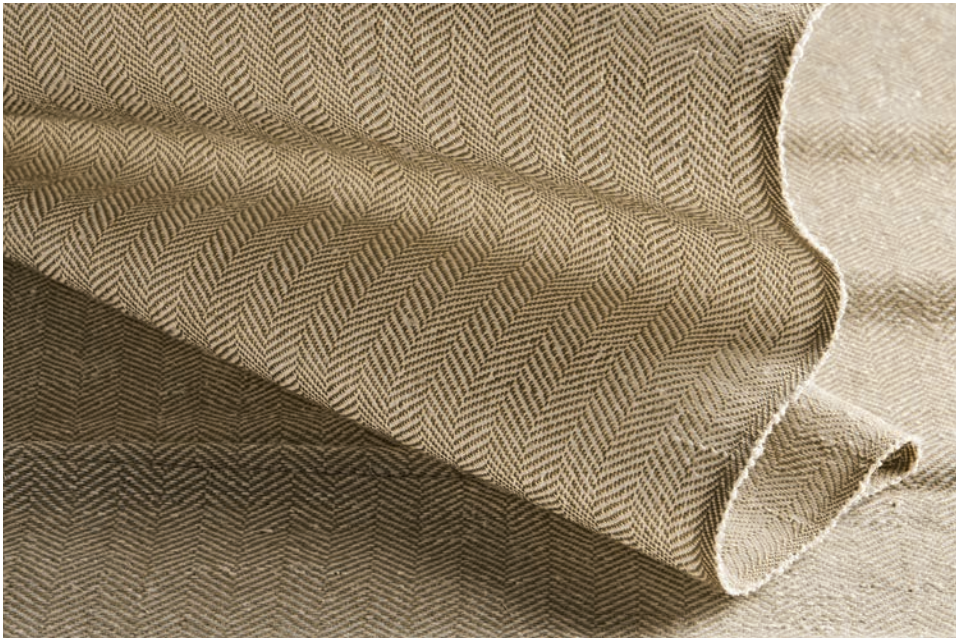
Humphrey's yearlong road trip exploring America's National Parks inspired this series. With a nod to nature, the tree motif is jacquard-handloomed of ramie in a forestry pine palette that brings the outdoors in.



LEMH505-54 Pine



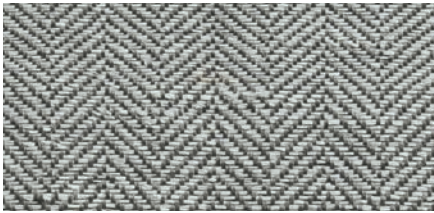
Woven-to-Size Grassweave
OLD STYLE ROMAN SHADE
LEMH505-54 Trees - Pine
Tailored-to-Size Colourweave
OLD STYLE ROMAN SHADE
Colourweave Modern - Custom Paint



LEMH506-21 Kindling



LEMH506-36 Cinder



LEMH506-60 Smoke

HERRING BONE

Rustic charm

Inspired by modern Americana and rustic alpine settings, this design is reminiscent of iconic camping blankets. Ramie is handwoven in a herringbone pattern that resembles miniature mountain peaks and rendered in an earthy tone-on-tone palette for visual depth and versatile style.



Woven-to-Size Grassweave
TRADITIONAL STYLE ROMAN SHADE
LEMH506-21 Herringbone - Kindling



Tailored-to-Size Colourweave
SUDARE OLD STYLE ROMAN SHADE
CWMS83 Junsei - Shiro
Edge Binding
890 Bamboo - Ivory



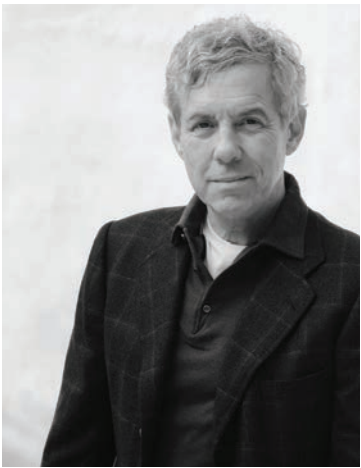
CWMS83 Shiro

MICHAEL S. SMITH

JUNSEI

Japanese elegance redefined

The Junsei series was inspired by traditional Japanese screens. This refined weave, now available in a radiant white, is handwoven with thinly sliced bamboo, allowing the sunlight to gently filter in.



H&F STUDIO

Sanctuary, by nature.

"Inspired by the essence of 'Sanctuary, by nature,' the Spring 2024 H&F Studio Collection weaves tranquility and beauty into every fiber, creating spaces that whisper of refuge, embrace harmony, and breathe restoration, all through the gentle embrace of natural elements."

Rebecca

Rebecca Welch,
H&F Director of Product Development

WINDOWCOVERING

STUDIO CONCEPTS

Inspired by traditional Balinese basketry, a new limited-edition design is introduced to this archetypal collection.

COLOURWEAVE

Made from sustainably sourced bamboo, a serene new palette of colors is added to the Colourweave Collection. Additionally, inspired by the traditional chik shade, a hand cross-threaded roll-up bamboo valance is introduced.

GRASSWEAVE

The elegantly refined Ethereal series gets five new earthy hues. Artisanally handwoven of sheer, silky-soft banana fiber, this series expresses a delicate sensibility.

ECOWEAVE

Introducing two new translucent series to this collection of eco-friendly, low-impact performance solutions. Available in earth tones and textures that complement our natural woven collections.

WALLCOVERING

The splendor of the American Southwest is on display with our newest wallcovering series, Canyon.

studio
concepts **KUTA**

Balinese beach vibes

Traditional basketry from Bali's Kuta Beach inspired this series. Hand-placed strands of aromatic vetiver set off with twisted yarn, woven with ramie rivulets, produce a richly textural landscape showcasing the fibers' rustic quality and artisanal character.



LE6509 Kuta



Woven-to-Size Grassweave
OLD STYLE ROMAN SHADE
LE6509 Kuta

introducing
**CHIK
VALANCE**

Inspired by the traditional chik shade design that originated in India to keep rooms cool yet bright, this natural roll-up bamboo valance is accented with a hand-carved wooden pulley and Linen Hemp edge binding.



Tailored-to-Size Colourweave
CHIK VALANCE
CW90 Gilas - Bambosa Cream
Edge Binding
906 Linen Hemp - Naturele

GILAS

Global inspiration

Rough-hewn bamboo splits in their natural state are artfully hand cross-threaded with a Mughal motif in creamy threads, creating a well-traveled aesthetic. This boldly textural design not only celebrates but elevates the imperfect beauty of natural materials.

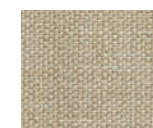


CW90 Bambosa Cream

edge binding LINEN HEMP



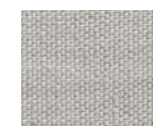
906 Naturele



927 Corda



912 Lino



936 Ostrica

COLOUR WEAVE

Nature's hues

An interior design classic, shades crafted from sustainably sourced bamboo gently filter the sunlight with low-key natural beauty. Available in Classic single warp and Modern double warp designs in natural and three new hues or custom painted to match whatever your heart desires.



CW74 Sierra



CW74d Sierra



CW73 Zion



CW73d Zion



CW75 Citron



CW75d Citron



CW00 Natural



CW00d Natural

Tailored-to-Size Colourweave
OLD STYLE ROMAN SHADE
CW74d Colourweave Modern – Sierra
Edge Binding
H&F SOFT NATURAL FABRIC
EW149-09 Mirage – Glow



shown in Ethereal's full color spectrum



Woven-to-Size Grassweave
 ROLLER STYLE SHADE
 LE5245 Ethereal - Serene
 Natural Wallcovering
 WL359 High Desert - Mojave

ETHEREAL

Exquisitely refined elegance

Woven by hand of sheer banana fiber, this natural woven shade series expresses a delicate sensibility. Ethereal's tonal, silky-soft fibers and natural sheen lend a light, refined look, while subtle, hand-tied knots add a hint of relaxed texture.



LE5206 Wispy



LE5227 Drift



LE5255 Celestial



LE5218 Sublime



LE5245 Serene

ECOWEAVE

Forward-thinking

Performance Rollershades layer perfectly with our range of natural woven shades.

ECO 101 captures the enduring charm and organic touch of linen in a high-performance material devoid of harmful chemicals and GREEN-GUARD Gold Certified. Airy, soft and subtly textured, the fabric filters the light beautifully.

EC101-03 Meadowsweet

EC101-06 Varuna

EC101-09 Chamomile

EC101-15 Ginseng

EC101-39 Roselle

EC101-42 Hawthorn

ECO 102 features a textural hand with dimensional slubs reminiscent of tree bark. Free of harmful chemicals and Oeko-Tex Standard 100 Certified, ECO 102 is light filtering and available in warm and cool earth tones.

EC102-03 Whitebeam

EC102-27 Paperbark

EC102-36 Elm

EC102-12 Alder

H&F STUDIO
performance rollershades

CANYON

Southwest splendor

Drawing inspiration from the dramatic terrain of the American Southwest, Canyon's combination of geometric forms conjures its towering mesas and expansive plains. Canyon is designed to coordinate with our Museum of Indian Arts and Culture collection.



WL429-12 Redrock



WL429-36 Keystone

ONE TREE PLANTED

Join us in planting
tomorrow's forests



Our connection to nature is deeply rooted in everything we do, and we're committed to giving back to the environment that inspires us. Partnering with One Tree Planted, we'll plant a tree for every order that, in turn, will help support global reforestation efforts to preserve biodiversity, restore ecosystems, and create a healthier world.



Printed with zero VOC/
low energy and UV inks

PO Box 1149 | Tualatin, OR 97062 | hartmannforbes.com
t 503.692.9313 | 888.582.8780 | f 503.692.9315

©2024 HARTMANN&FORBES, INC