

ERINN V.  
BY  
HARTMANN & FORBES®

DESIGNER COLLABORATION







ERINN  
V.

---

“THE INSPIRATION FOR THIS  
COLLECTION WAS TO DESIGN A VERY  
USABLE AND LIVEABLE NEUTRAL  
ASSORTMENT OF WINDOWCOVERINGS”

Founder of the award-winning design firm, Erin V. Design Group, and ERINN V. furniture brand, as well as the visionary behind StyleRow, Erin Valencich's signature look is synonymous with the classic California lifestyle. Based in Santa Barbara, her designs are distinguished by impeccable craftsmanship and luxe livability, creating dynamic spaces with a sense of drama.



GRASSWEAVE [WTS]

## DOCKSIDE

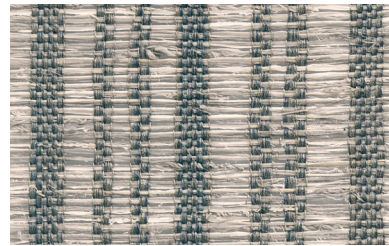
Drawing inspiration from picturesque docks found along the west coast, Dockside's variegated stripes descend the relaxed ramie weave, evoking the profile of a pier and producing a play of texture and tension against the tonal, open ground.



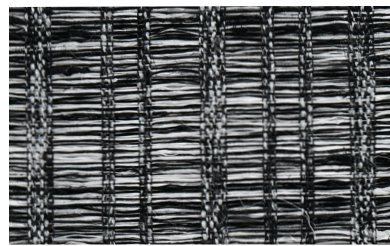
LEE52-03 Breakwater



LEE52-09 Sandbar



LEE52-36 Cove



LEE52-87 Jetty







GRASSWEAVE [WTS]

# WHITECAPS

Evocative of waves breaking on the seashore, refined ramie is woven with richly dimensional ramie slubs that ebb and flow across the canvas, producing an artful, abstract pattern conjuring the look of cresting whitecaps.



LEEV51-03 Swell



LEEV51-06 Tide



LEEV51-09 Breaker



LEEV51-36 Surf

Window Price Group: 5 | Max Width: 180"  
Available Styles: Roman, Top Treatment

Shown: LEEV51-03 Whitecaps – Swell, Old Style Roman

888.582.8780 | HARTMANFORBES.COM





GRASSWEAVE [WTS]

# AT SEA

Inspired by traditional fishing nets, At Sea features an open weave hand loomed from natural palm and ramie fibers. Rendered in a range of coastal hues, the design's rhythmic grid pattern gives the textural tableaux a sense of structure that suits formal and informal settings alike.



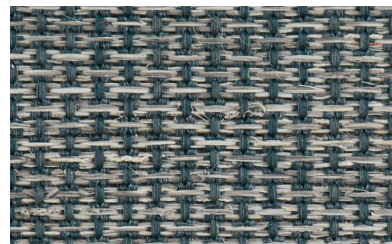
LEEV50-03 Sail



LEEV50-09 Sanddab



LEEV50-12 Halyard



LEEV50-57 Ocean



LEEV50-60 Reef



**Window** Price Group: 5 | Max Width: 180"  
Available Styles: Roman, Top Treatment