

FEATURED IN



Publication: Connecticut Cottages And Gardens

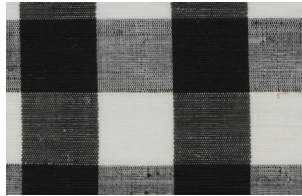
Date: September 2021

Article: DESIGN NOTES: A peek inside the latest buzz-worthy design news happening in the area | p46

Product Shown:



LEMH500-21
Gingham - Gold



LEMH500-87
Gingham - Black

Order no-charge memos online at hartmannforbes.com or contact your local representative showroom.



DESIGN NOTES

DESIGN NOTES

A peek inside the latest buzz-worthy design news happening in the area



DETROIT COOL

Two heritage brands, **Crate & Barrel** and **Shinola Detroit**, have joined forces on a new collection of exclusive handcrafted furniture and housewares. Featuring 115 pieces, including furniture, textiles, bedding, home décor and lighting, each product celebrates craftsmanship in Shinola's signature Detroit cool style. Watchmaker details like top-stitched leather, along with textured textiles and clean-lined construction, add to the handsome and comfortable designs. Available through *Crate & Barrel, Westport, 203-222-9500, crateandbarrel.com*.

WALLFLOWERS

Rifle Paper Co.'s signature florals and charming illustrations, inspired by Anna Bond's handpainted artwork, are brought to life with **York Wallpaper's** premium peel-and-stick technology. The collection delivers the quality of traditional wallpaper in an easy-to-use format and is offered in seven brand-new patterns, including a peel-and-stick mural, *Strawberry Fields*. Anna Bond shares her enthusiasm for the new designs. "As we have seen our customers excitedly welcoming our wallpaper patterns into their homes,

we wanted to create a brand-new peel-and-stick collection featuring colorful, inviting prints and patterns. From moody colorways to luscious florals, I hope each design inspires our customers to bring new beauty into their homes with this do-it-yourself friendly format." Available through *Rifle Paper Co., riflepaperco.com* and *newyorkwallcoverings.com*.

QUILTING BUZZ

Textile artist **Victoria van der Laan** offers a fresh look at an old craft. Paying homage to traditional

piecework in a modern vernacular, she has created on an assemblage of quilts, shams and decorative pillows for **Annie Selke**. The bright colors and graphic patterns are inspired by landforms with names like *Boulders, Blades and Stones* and iconic quilt patterns—*Plaid Patched* and *Mod Cabin*—that reinterpret classic quilting in a contemporary style. Hailing from a long line of women makers, van der Laan blurs the lines of craft and art, saying, "I see the work of *Sol LeWitt, Josef Albers* and *Frank Stella*, and I think, that's a quilt." Notes **Annie Selke**, President and Chief Vision Officer of the **Annie Selke Companies**, "Van der Laan's quilts and textile works are the embodiment of craftsmanship and artistry, and invite you to think about the age-old tradition of quilt making in an entirely new and modern way." *annieselke.com*.

NEW AMERICANA

Designer **Max Humphrey** has designed a collection of window treatment fabrics for **Hartmann & Forbes**. The textiles are handcrafted of sustainable natural materials and represent Humphrey's love of all things Americana, including cable knit sweaters, quilts and the simplistic appeal of grain sacks. Born in *New Hampshire*, his *East Coast* sensibility is blended with the laid-back comfort of the *Pacific Northwest* of his current home in *Portland, Oregon*. **Hartmann & Forbes** is known for its bespoke windowcoverings in sustainable fibers harvested from rapidly renewable, well-managed ecosystems, hand picked for color, texture and the inherent subtle variegations that add textural

authenticity. The textiles are handwoven on a loom utilizing techniques refined over generations. Available through *Holly Hunt, D&D, NYC, hartmannforbes.com*.

ARCHITECTURAL LIGHTING

New York City designer **Charles Pavarini III** has designed a lighting collection with Vancouver-based lighting manufacturer **Alora Lighting**. The fixtures premiered in June at the *Dallas Lightovation* show. The transitional designs feature classical details incorporating LED technology and are executed with the craftsmanship and manufacturing capability of **Alora Lighting**. Pavarini's grandfather is credited with shaping such historic NYC landmarks as the *Seagram's Tower*, the *State Theater* at *Lincoln Center* and the *United Nations*. His grandson's designs also tell an architectural story in rich metals of soft brushed vintage brass and edgy urban bronze, paired with *alabaster, wood and glass*. Available through *Fashion Light Center, 68 Putnam Ave., Greenwich, 203-869-3098, aloralighting.com, parvarinidesign.com*. —*Mary Fitzgerald*



Alora Lighting



Hartmann & Forbes