



HARTMANN & FORBES[®]

TABLOID | SPRING/SUMMER 2016


NEW ARRIVALS

NATURAL FABRICS | GRASSWEAVES

COLOURWEAVES | PERFORMANCE FABRICS

NEW 2016 REFERENCE GUIDE KIT

SHOWHOUSES

Three birch branches are shown against a light background. Each branch has a fabric butterfly attached to it. The butterflies are made of different materials: one is grey and blue striped fabric, one is light brown burlap, and one is a darker brown burlap. The branches are light-colored with some peeling bark.

“If you truly
love nature,
you will
find beauty
everywhere.”

~Vincent van Gogh

PURPOSE, PASSION AND CREATIVITY—all are paramount if your dream is to make an authentic impact in the world through any artistic endeavor.

Like Van Gogh, we have discovered and realized our unique point of view. Our purpose is to help the designer of luxury interior spaces create sanctuary through natural design.

This authentic and unique perspective is rooted in our love of nature and all of its many inspirations. Connecting ourselves with the natural world actuates the process of reunification, rebalance and renewal.

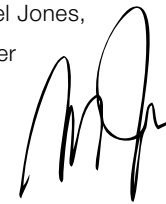
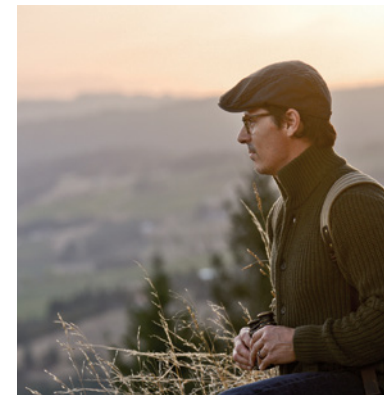
This year, we tore down the walls that kept us from fulfilling our purpose. Our focus was on the ideas that truly move us—concepts that propel our artistic expressions.

We refined our collections to reflect this vision. In these pages you will find an eclectic mixture of coordinated products, adding new colorways, textures and designs to our natural offering. We have also spent months conceiving our print Reference Guide Kit for 2016 in an effort to showcase our broadening range of natural products.

We hope that by creating a body of work that we are proud of, it can live on in spaces that are relaxed and restful; lived in and enjoyed.

As always, thank you for being a partner in this great adventure of design, and for helping us to refine our meaning and purpose.

Michael Jones,
Founder

A handwritten signature in black ink, appearing to be 'MJ', written in a cursive style.

NATURAL FABRIC

OUR NEWEST
PATTERNS, TEXTURES AND TONES

We proudly present brand new series and new interpretations of familiar ones. Practicing old-world techniques, fibers are carefully spun and dyed to rich, earthy tones. Hinting at the exotic, these woven treasures remain grounded in the modern movement.



©CELC - European Confederation of Flax and Hemp - www.mastersoflinen.com

FROM NORMANDY TO AMSTERDAM, the perfect coastal conditions of soil and climate give birth to fields of flax, and in turn, intimate relationships with all those who have come to know this uncommon fiber. The magic of linen has conjured creations for millennia.

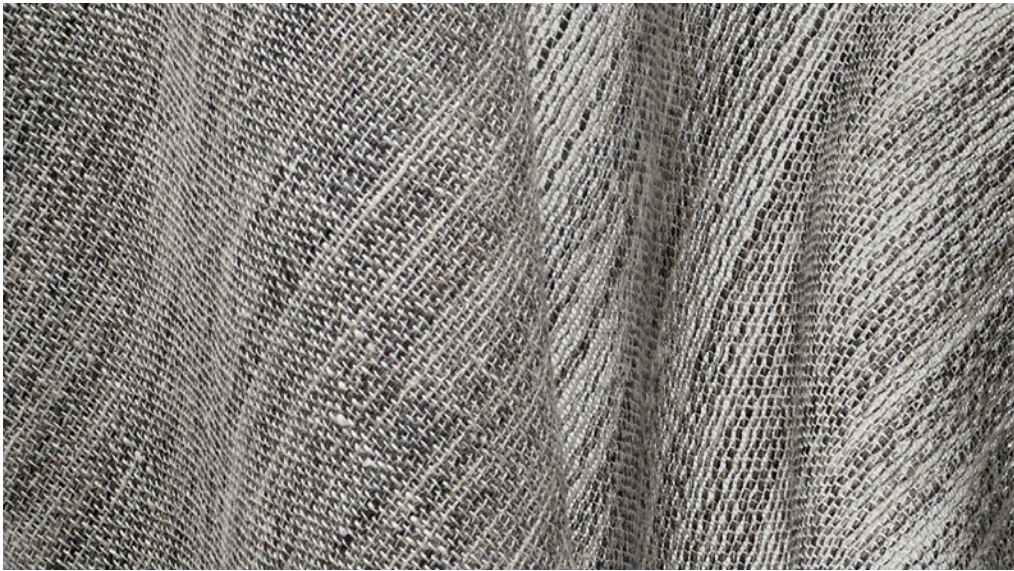
Harvested at the perfect time—often within one or two days—these high-performance plants yield a fabric worthy of the MASTERS OF LINEN certification—a registered mark and sign of excellence for linen 100% made in Europe from field to farm to fabric.





FABRIC SHADE
 EW104-60 Graystone | TRO2 Linen
Natural Fabric | *Translucent Liner*

PILLOW
 EW108-60 Shade
By-the-Yard Natural Fabric



Modern interpretations of the finest linen are inspired by outdoor's presence. These new series combine enduring colors with an elegant flair.

WEATHERED



EW104-60 Graystone



EW104-18 Sandstone

ARBORETUM



EW108-60 Shade



EW108-21 Bask

CORDS

Graceful with a rustic twist, this design series features tufted cords artistically embroidered on a heavy linen ground. As wearable as fashion, this contemporary textile will dress any window in style.



EW109-06 Cotton



EW109-12 Burlap



RIBBED

With a raised pinstripe pattern, this sheer linen brings casual chic to an interior. The multi-color thread detail offers a dynamic and differentiated look.



EW105-06 Buff



EW105-60 Denim

To inspire exploration of harmonious interiors, we have added stunning new colorways to these popular series.



WINDSOR
EW290 Palomino*

BOUCLE
EW266 Crochet*

BRUSHED
EW91m Merano*

* The three weaves shown above are not Masters of Linen certified



GRASSWEAVE

ALL-NEW HANDWOVEN DESIGNS
COMBINE WITH SMART, NEW EXPRESSIONS

Our new Woven-to-Size Grassweave windowcoverings are the result of months of considerable experimentation and discovery. Working in concert using only sustainable fibers, we've blended age-old, hand-loomed techniques with fresh, sophisticated interpretations. Customized up to 180" wide with our signature loom-finished edge, our goal is to present you with greater possibilities in your quest to express unique interior spaces.





NATURAL WOVEN SHADE
 LE1660 Thunder
 Grassweave [WTS]

CROSSHATCH

A unique interpretation of chambray fabric, this series is woven with palm fibers and Italian-inspired spun yarn that shows evidence of its innovative construction.



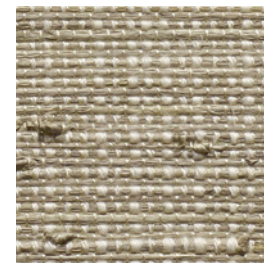
LE1606 Natural



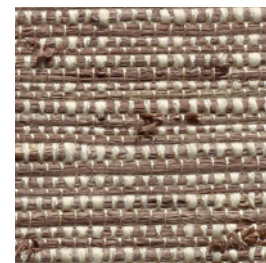
LE1609 Wheat



LE1618 Flax



LE1639 Dust



LE1642 Tea



LE1660 Thunder

SHALE

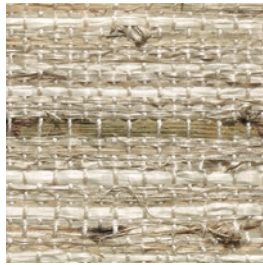
Referencing the raw beauty of high desert geology, naturalistic color bands are stacked to achieve a striae effect. Arrowroot fibers in shades of desert sand combine for tonal beauty.



LE1506 Sand



LE1512 Dune



LE1530 Sage





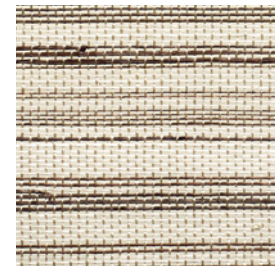
NATURAL WOVEN SHADE
 LE1242 Arabian | SH02 Linen
 Grassweave [WTS] | Sheer Liner

Designer Navarra Design
 Photographer Matthew Millman



TISSAGE

Inspired by horsehair weaving traditions, layers of chestnut, grey, caramel and cocoa are woven for a rich texture. Perfect for dramatic shading statements.



LE1218 Cremello



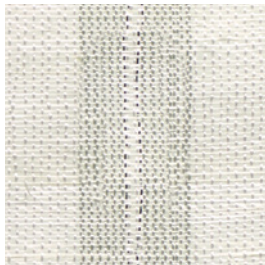
LE1239 Dapple



LE1242 Arabian

GLISTEN

A delicate accent of silvery filaments infuses this weave with metallic that sparkles under incandescent lighting.



LE1403 Aura



GLIMMER

This lustrous fine weave is ethereal, almost weightless, accented with micro hand knots that inject a pared-down luxe aesthetic.

LE1003 Shantung



LE1803 Parchment

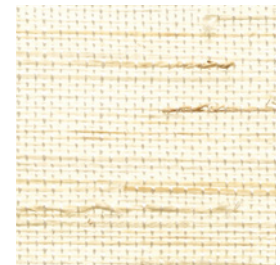
VINTAGE

Behold a grassweave pattern that effortlessly blends with contemporary and traditional interiors alike. The matte finish demonstrates a natural and organic nature.



ELEMENTS

Fresh, pure and timeless, this richly refined linen-like textile offers sophisticated beauty in comfortable new colorways.



LE1006 Cambric



LE1015 Cambresine

WOODSTOCK

With naturalistic designs in deep woodland colors of walnut, moss and straw, this handsome multi-colored weave creates a cozy mountain feel.

LE1169 Moorea



LE1130 Palm

CABANA

Densely woven, contrasting fibers in soft, subtle hues create a relaxed and approachable weave in sand tones that evoke a laid-back island vibe.

GRASSWEAVE

IMPROVING UPON OUR ORIGINAL
GRASS FIBER COLLECTION

Our collection of natural weaves express a relaxed, yet refined sophistication and charm. In a broad range of designs and available in seamless widths up to 120," our Tailored-to-Size materials are pre-woven and in stock to help accommodate requests for shorter lead time.



BASIN

Elegant and finely tailored, this soft woven, hand-knotted jute features warm soothing tones of tans and greys.



No.92 Mu Basin



No.95 Saru Basin



NATURAL WOVEN SHADE
No.91w Winter Linen
Grassweave [TTS]

DRAPERY
EW266 Crochet
By-the-Yard Natural Fabric

LINEN

Crisp, minimal and delightfully modern, the Linen series has the natural approachability of linen fabric. Our new Winter Linen complements this series' wide range of interior color schemes.



No.91w Winter Linen



COLOURWEAVE®

A CONTEMPORARY
INTERPRETATION OF A CLASSIC

We've added a modern design to our portfolio of weaves made from the inside peel of sustainable bamboo. This traditional matchstick pattern, now available in a new double-warp design, comes in standard colors, or can be custom painted to perfectly coordinate with any décor.



CW36d Park Avenue

CW72d Stone

CW71d Sand Dune

CW29d Quartz

CW09d Sand Dollar

CW70d Frost

PERFORMANCE FABRIC

DURABLE AND VIRTUALLY
MAINTENANCE-FREE

Appearing delicate and sheer, yet boasting remarkable durability, these additional offerings, like all in the collection, are woven from man-made fibers requiring little upkeep. With high-performance properties including heat and glare reduction, UV filtration and privacy, these graceful fabrics meet or exceed commercial fire standards.



SHEER PRIVACY FABRIC

PFSH01 Soft White

PFSH02 Linen

PFSH03 Khaki

PFSH06 Asher



9000 SOLARSCREEN

G03 Snow

G06 Natural

G09 Wheat

G15 Smoke

G42 Earth



5000 SOLARSCREEN

SW5089 Enoki

SW5092 Porcini

SW5090 Maitake

2016 REFERENCE GUIDE KIT



To inform and inspire, we're excited to announce the release of our 2016 Reference Guide Kit featuring our complete natural product collections. The kit is comprised of four pieces which include:

PRODUCT PORTFOLIO – a lookbook featuring inspirational photography, weave images and weave detail.

SPECIFICATION GUIDE & PRICE LIST – color images of each system, specifications, measuring instructions and designer net pricing.

NATURAL WOODBLIND PRODUCT PORTFOLIO – inspirational photography of our Natural Woodblinds, slat finish images and detail.

NATURAL WOODBLIND SPECIFICATION GUIDE & PRICE LIST – color images, measuring instructions and designer net pricing.

To order a Reference Guide Kit, please contact your local representative showroom.

SPECIFICATION UPDATES



NEW STYLE DUAL-SHADE – WOODBLIND

This Dual-Shade system features a roman shade with a woodblind mounted behind, lending a unique appeal to the interior and exterior of a home, and provides flexible sunlight and privacy.

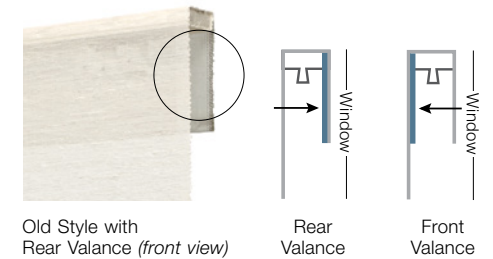
**NATURAL WOVEN SHADE
OLD STYLE**
LE1015 Elements-Cambresine
Grassweave (WTS)

PRIVACY WOODBLIND
WB68 Stain-Driftwood
Natural Woodblind

NEW NO-CHARGE OPTIONS

ROMAN SHADE VALANCES

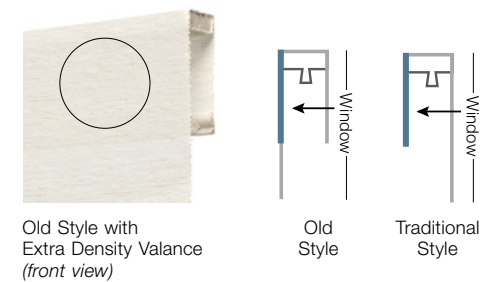
To best showcase sheer open weaves with a privacy level 1 or 2, consider a lined front or rear valance to hide componentry—now at no charge. Available in Old Style and Traditional Style.



UPGRADE OPTION

EXTRA DENSITY VALANCE

Extra density is woven into top 6"L of shade body of an Old Style, or valance of a Traditional Style roman shade.



UPDATE

OLD STYLE VALANCE

Old Style roman shades ordered as outside mount are now standard with rear valance.



NEW NO-CHARGE

REAR LINER VALANCE

When specifying an Old Style roman shade with privacy liner, adding a Rear Liner Valance offers a consistent look when viewed from the home's exterior.



NEW UPDATES

COMPONENTRY

We now offer a new color tassel in both Arc and Sculpted. Also available are new bracket colors and metal cord cleats—now at no charge.



SHOWHOUSE GALLERY

THE DESIGNER SHOWHOUSE OF NEW JERSEY
saddle river, new jersey



NEW
NATURAL WOVEN SHADE
OLD STYLE
LE1003 Glimmer-Shantung
Grassweave [WTS]

Designer Jennifer Mcgee Design
Photographer Peter Rymwid
www.jennifermcgeedesign.com



WALL
WALLCOVERING
WL410-12 Tahoe-Icecap
Natural Wallcovering

Designer Patrick Dragonette
Photographer Dan Arnold Photo
www.dragonetteid.com

MODERNISM WEEK | CHRISTOPHER KENNEDY COMPOUND
palm springs, california



MAISON DE LUXE AT GREYSTONE MANSION
beverly hills, california



NEW
NATURAL WOVEN SHADE
OLD STYLE
PE602-09 Harmony-Blended Raffia
Papyrusweave [WTS]

Design Firm Redmond Aldrich Design
Photographer Laure Joliet
www.redmondaldrich.com



NEW
NATURAL WOVEN SHADE
OLD STYLE
Modern-Custom Color
Colourweave [TTS]

DRAPERY
EW109-06 Cords-Cotton
By-the-Yard Natural Fabric

Designer Erin Valencich
Photographer Michelle Drewes
www.erinnvdesigngroup.com

TRADITIONAL HOME NAPA SHOWHOUSE
napa valley, california



For showhouse project support, please contact a Hartmann&Forbes
Regional Manager at hfsales@hartmannforbes.com

SHOWROOMS

We are happy to announce that Hartmann&Forbes is now featured in the Jasper Showroom on Melrose Avenue in Los Angeles, CA. We'd also like to recognize Larry Gerber, who's now representing Hartmann&Forbes in eastern Pennsylvania.

Visit hartmannforbes.com/showrooms to find your local representative showroom.



WINDOWCOVERINGS, WALLCOVERINGS AND TEXTILES
HANDCRAFTED OF SUSTAINABLE NATURAL MATERIALS



PO Box 1149 | Tualatin, OR 97062 | hartmannforbes.com
t 503.692.9313 | 888.582.8780 | f 503.692.9315

©2016 HARTMANN&FORBES, INC