

MAX HUMPHREY  
BY  
HARTMANN & FORBES®

DESIGNER COLLABORATION





## MAX HUMPHREY

---

“FOR ME, DESIGN IS NOSTALGIA.  
I’M INSPIRED BY THINGS FROM MY  
NEW ENGLAND CHILDHOOD”

*Max*

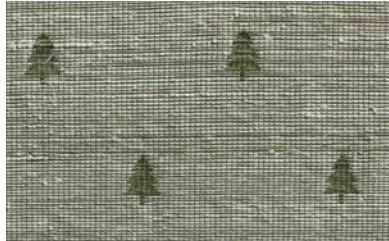
Recognized as a design change-maker and known for his trademark lived-in layered look, Humphrey’s collection celebrates modern Americana with a nod to nostalgia and a fresh take on classic prints and patterns — gingham, quilt, and cable knit — rendered in Hartmann&Forbes’ handwoven natural textiles.



GRASSWEAVE [WTS]

# TREES

Humphrey's yearlong road trip exploring America's National Parks inspired this series. With a nod to nature, the tree motif is jacquard-handloomed of ramie in a forestry pine palette that brings the outdoors in.



LEMH505-54 Pine NEW



Window Price Group: 5 | Max Width: 100"  
Available Styles: Roman, Top Treatment

Shown: LEMH505-54 Trees - Pine - Old Style Roman



GRASSWEAVE [WTS]

## HERRINGBONE

Inspired by modern Americana and rustic alpine settings, this design is reminiscent of iconic camping blankets. Ramie is handwoven in a herringbone pattern that resembles miniature mountain peaks and rendered in an earthy tone-on-tone palette for visual depth and versatile style.



LEMH506-21 Kindling NEW



LEMH506-36 Cinder NEW

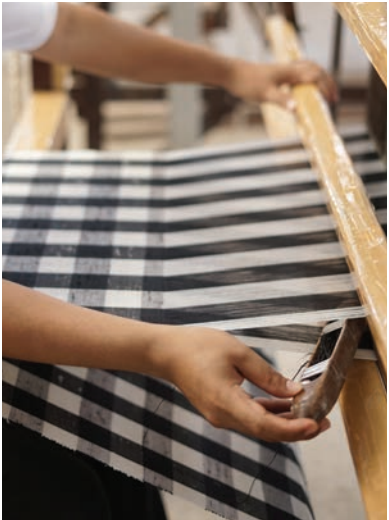


LEMH506-60 Smoke NEW

**Window** Price Group: 5 | Max Width: 180"  
Available Styles: Roman, Roller, Top Treatment

Shown: LEMH506-21 Herringbone – Kindling, Traditional Style Roman





GRASSWEAVE [WTS]

# GINGHAM

Humphrey reimagines this traditional gingham check as a versatile neutral. Its simple, medium-scale motif is loomed of natural ramie fibers, creating subtle variations in each square that soften the geometric grid and highlight its handcrafted quality. The weft fibers are dyed to match the warp, infusing the two-tone pattern with graphic impact and visual dimension.



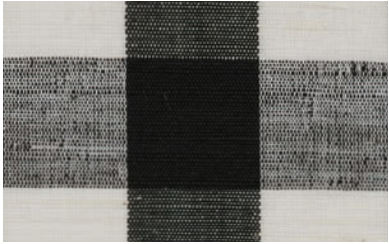
LEMH500-21 Gold



LEMH500-36 Gray NEW



LEMH500-57 Blue NEW



LEMH500-87 Black

Window Price Group: 5 | Max Width: 180"  
Available Styles: Roman, Top Treatment

Shown: LEMH500-87 Gingham – Black, Old Style Roman



GRASSWEAVE [WTS]

## GRAIN SACK

Inspired by vintage grain sacks, this series elevates the humble carryall to a nostalgic, handcrafted design. The sturdy ramie weave is accented with slender stripes of red, white or blue against a denim or natural ground, evoking a quintessential Americana mood in a fresh format.



LEMH502-06 Natural

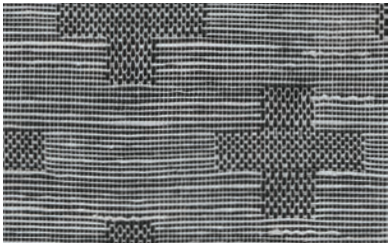


LEMH502-57 Denim

**Window** Price Group: 5 | Max Width: 180"  
Available Styles: Roman, Roller, Top Treatment

Shown: LEMH502-06 Grain Sack - Natural, Old Style Roman





LEMH501-84 Charcoal

GRASSWEAVE [WTS]

# CROSS

An age-old symbol in nature and iconography, the venerable cross is reinterpreted in jacquard-handloomed ramie. The crosses, formed of an intricate check pattern, float in a textural landscape delineated by horizontal lines, its tonal black-and-white palette producing a primitive, understated design.

Window Price Group: 5 | Max Width: 100"  
Available Styles: Roman, Top Treatment

Shown: LEMH501-84 Cross – Charcoal, Old Style Roman



GRASSWEAVE [WTS]

# QUILT

A modern take on traditional quilts, this series nods to the nostalgia of handmade crafts with its classic chain motif. The geometric pattern and two tonal colors provide a contemporary twist, while jacquard-handloomed ramie creates subtle variations in the weave for rich texture and visual dimension.



LEMH504-18 Faded Khaki



LEMH504-57 Indigo

**Window** Price Group: 5 | Max Width: 100"  
Available Styles: Roman, Top Treatment

Shown: LEMH504-57 Quilt – Indigo, Old Style Roman  
WL374 Alpine – Aspen, Wallcovering

GRASSWEAVE [WTS]

# CABLEKNIT

Reminiscent of iconic New England sweaters, this series is distinguished by its rich dimension rendered on a jacquard hand loom. A dense weave of refined ramie features alternating cable ribs framed in columns. They twist down planes of fabric, imparting visual depth and subtly raised texture in a design at once classic and contemporary.



LEMH503-57 Heathered Blue



LEMH503-15 Heathered Gray

**Window** Price Group: 5 | Max Width: 100"  
Available Styles: Roman, Top Treatment

