

HARTMANN & FORBES

FALL/WINTER 2022

INTRODUCING
THE LISA KANNING
COLLECTION

H&F STUDIO
DESIGN UPDATE

SANCTUARY, BY NATURE



“LET US
TREASURE
OUR ROOTS,
EVEN WHEN
WE’RE FAR
AWAY.”

~ NATALIA
LAFOURCADE

OUR HERITAGE AND ROOTS MOLD US AS HUMAN BEINGS,
playing an integral role in the way we process the world.

Growing up in the Pacific Northwest, I spent my childhood outdoors in beautiful landscapes — skiing and climbing the Cascades, surfing and diving the coastlines, swimming and rafting the rivers. Nature nurtured my soul, instilling in me a lifelong desire to preserve and protect its treasures for future generations.

Working in this spirit, our team spent time this season with the acclaimed interior designer Lisa Kanning, collaborating on her new window and wall covering collection. Lisa’s rural Montana roots, combined with her clear vision of the modern urban aesthetic, blend perfectly to define her signature natural look. Her collection reflects the epic surroundings of her Montana upbringing, in a way that is uniquely fashion forward and contemporary in appeal.

We hope this season’s introductions—from the super-refined Ethereal series to the bold textures of Lisa’s collection—will encourage you anew to continue creating a sense of sanctuary rooted in natural design.



Yours In Nature,

Michael Jones,
Founder

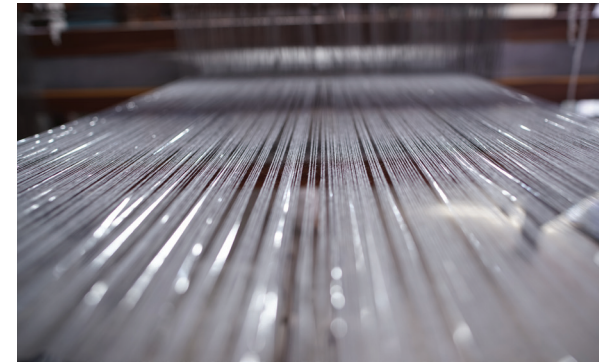


LISA KANNING

From her base in New York City, where she operates her firm, acclaimed interior designer Lisa Kanning serves clients across the country. Her high-profile projects are marked by clean lines, textural contrast, and a sense of proportion. Named a Luxe Gold List 2021 Honoree, her work is frequently featured in prominent shelter magazines.

Influenced by a rural Montana upbringing, Kanning's love of organic shapes and materials informs her collection for Hartmann&Forbes. Layered window and wallcoverings are detailed with intricate patterns that mimic those found in nature while maintaining a sophisticated sensibility that suits a range of settings.

MOUNTAIN meets MODERN



ZENITH + SYCAMORE

SLENDER METALLIC STRIPES SHIMMER against a field of sheer banana fiber in ZENITH. The delicate tone-on-tone windowcovering design is woven with dimensional traces of copper or silver that gracefully descend the fabric. Pairing with SYCAMORE, reminiscent of tree bark, this complex-layered wallcovering features a captivating camouflage pattern.

Woven-to-Size Grassweave
OLD STYLE ROMAN SHADE
LELK44-60 Zenith - Vapor

Natural Wallcovering
WLLK47-30 Sycamore - Sage

BIRCH

INSPIRED BY NATURAL BIRCH bark, this series reinterprets its namesake in a richly textural design. The large-scale, dimensional pattern is elaborately stitched with slate or gold threads that play a delicate counterpoint to a rough-hewn cork ground over metallic paper.



Natural Wallcovering
WLLK46-34 Birch – Wisteria
Birch – Wisteria Ground



FUNGI + MARSH

WOVEN OF WEIGHTY RAMIE, FUNGI natural windowcovering is distinguished by hand-placed mending flowers inserted into the weft, creating a series of dark-slubby streaks that recall the frilly edge of a mushroom cap sprouting from the forest floor. The perfect combination with MARSH, a natural wallcovering embroidered with dimensional stitches that free and separate the fibers. Its fringed eyelash effect is reminiscent of the graceful movement of grass in a marsh.

Woven-to-Size Grassweave
OLD STYLE ROMAN SHADE
LELK40-06 Fungi - Mushroom

Natural Wallcovering
WLLK49-18 Marsh - Fawn

CENOTE + ROCKS

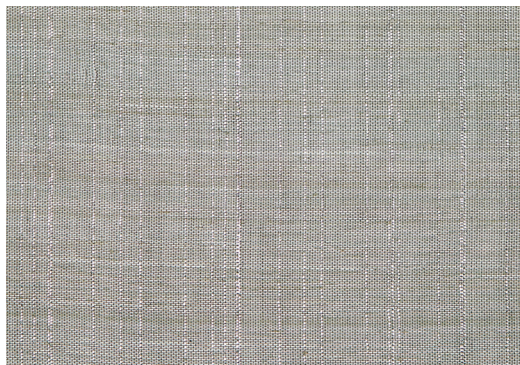
LONG, HANGING VINES suspended over Yucatan sinkholes served as inspiration for CENOTE, an earthy yet elegant natural windowcovering handwoven of refined abaca with gleaming gold, silver, and copper threads. A perfect contrast to ROCKS, a natural wallcovering intricately stitched in complementary colors on a faux suede ground.

Woven-to-Size Grassweave
OLD STYLE ROMAN SHADE
LELK41-21 Cenote - Oro
Natural Wallcovering
WLLK48-18 Rocks - Topaz
Rocks - Topaz Ground

LISA KANNING COLLECTION COLORWAYS + DETAILS



ZENITH
woven-to-size
windowcovering



LELK44-60 Zenith – Vapor | shown pg5



LELK44-06 Zenith – Halcyon

SYCAMORE natural wallcovering



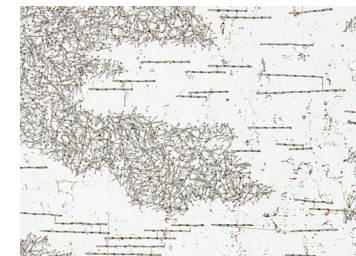
WLLK47-30 Sycamore – Sage | shown pg6



Sycamore – Sage Ground



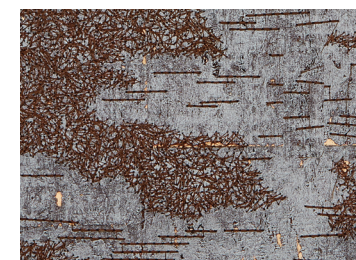
BIRCH natural wallcovering



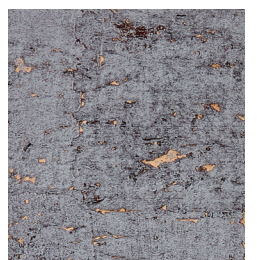
WLLK46-03 Birch – Gardenia



Birch – Gardenia Ground



WLLK46-34 Birch – Wisteria | shown pg7



Birch – Wisteria Ground



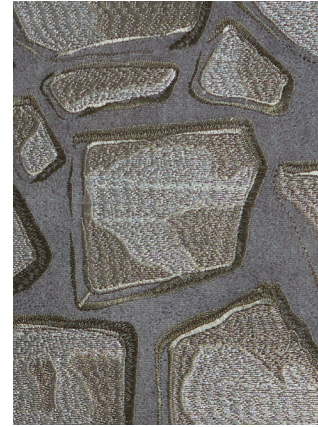
LELK40-06 Fungi – Mushroom | shown pg9



ROCKS natural
wallcovering



WLLK48-18 Rocks – Topaz | shown pg11



WLLK48-60 Rocks – Pyrite



Rocks – Topaz Ground | shown pg11



Rocks – Pyrite Ground



MARSH natural
wallcovering



WLLK49-18 Marsh – Fawn | shown pg9



Marsh – Fawn Ground



LELK41-21 Cenote – Oro | shown pg12

H&F STUDIO

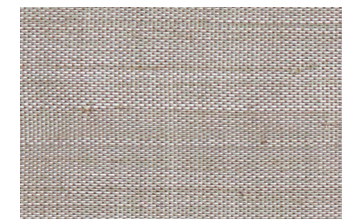
REFINED ELEGANCE, NATURALLY

Handwoven of lustrous banana fiber and almost too perfect for this world, ETHEREAL is added to the Grassweave Woven-to-Size Collection – striking just the right balance of texture and sheen for any modern setting.

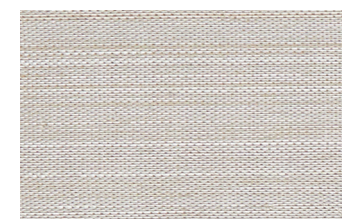
Banana fiber has been used for centuries in textiles, handicrafts, and more. The fiber is extracted from the fleshy stalks of the banana plant, which would otherwise be discarded as agricultural waste. Prized for its strength, refinement, and beautiful luster, banana fiber is also biodegradable and eco-friendly. The sustainable material has a minimal environmental impact due to the limited use of water and electrical energy in its production, and it requires no pesticides or fertilizers for cultivation.



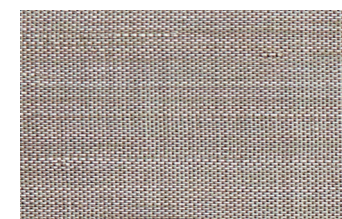
ETHEREAL



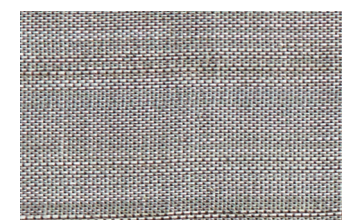
LE5212 Whisper – a warm taupe



LE5215 Aire – a light warm grey



LE5239 Hazee – a medium warm grey



LE5260 Breeze – a medium cool grey

Handwoven of sheer banana fiber, this series expresses a delicate sensibility in four natural colorways.

Ethereal's tonal, silky-soft fibers and natural sheen lend a light, super refined look while subtle, hand-tied knots add a hint of relaxed texture.



HARTMANN & FORBES SANCTUARY, BY NATURE™



LIVING GREEN

A JOURNEY TO A SUSTAINABLE
WAY OF DOING BUSINESS

We are intricately intertwined with our natural world. This connection generates a deep appreciation for the planet and a greater sense that we need to participate in the preservation of its treasures for future generations.



HANDWOVEN ARTISTRY

UTILIZING THE LOOM AS OUR TOOL, WE FOLLOW
TECHNIQUES REFINED OVER GENERATIONS

Our weave masters blend hand-prepared natural fibers using a complex rhythm of warps and wefts. Doing this work completely by hand, rather than machine, affords us more creative freedom to push the boundaries of weave structure and design.

NATURAL FIBERS

SUSTAINABLE MATERIALS OF NOBLE CHARACTER
ARE THE BASIS OF OUR ARTISTIC MEDIUM

We begin the process of creating luxury woven products by choosing only the finest sustainable fibers, each rapidly-renewable and grown in well-managed ecosystems. Every strand is hand selected for subtle variations of color and texture.



DESIGN BREADTH

A TIMELESS PALETTE OF EARTHY
COLOR AND TEXTURAL NUANCE

We offer the industry's largest collection of natural, handwoven designs for your window and a unique assortment of natural handcrafted wallcoverings.



ORDER THE 2022 REFERENCE KIT
to get inspired and peruse
our entire offering



For 10 years we have been recognized as one of the best green workplaces in Oregon.

Preserving the environment is part of who we are and what we do everyday.



PO Box 1149 | Tualatin, OR 97062 | hartmannforbes.com
t 503.692.9313 | 888.582.8780 | f 503.692.9315

©2022 HARTMANN&FORBES, INC

Furniture, Rugs and Art Courtesy: Bright Chair, David Sutherland, Dennis Miller Assoc., Fort Street Studios, JAB showroom, Jiun Ho, Konekt, Merida, and Wexler Gallery



Printed with zero VOC/
low energy and UV inks