


HARTMANN & FORBES®

FALL/WINTER 2021



INTRODUCING THE
MAX HUMPHREY
COLLECTION

H&F STUDIO
UPDATES



“TO PUSH
THE BOUNDARIES,
YOU NEED TO KNOW
WHERE THE EDGES ARE”


~ Mark Boulton

OUR APPROACH REMAINS UNCOMPLICATED; create beautiful handcrafted products that are born of sustainable materials and made with integrity. This intense focus allows us to push the boundary of what can be created with plant-based fibers, a wooden handloom, and some creative ingenuity.

For this season, we were delighted to collaborate with Max Humphrey, one of the Pacific Northwest's most notable talents, bringing to life a melding of his trademark nostalgia-inspired designs with our earthy, handwoven textiles to create truly authentic products.

We continue to be obsessed with offering you the largest and most diverse collection in the marketplace to design sanctuary, and we appreciate your ongoing partnership in the journey to deliver restorative interiors.

Sláinte,



Michael Jones,
Founder





MODERN
AMERICANA

A NOD TO
NOSTALGIA



MAX HUMPHREY

RECOGNIZED AS A DESIGN CHANGE-MAKER, Max Humphrey is a Portland-based interior designer, art director and product designer. His trademark lived-in, layered look has earned accolades, including being named a “Next Wave” designer by House Beautiful and one of Country Living’s 100 most creative people. The Max Humphrey Collection by Hartmann&Forbes celebrates Modern Americana with a nod to nostalgia and a fresh take on classic prints and patterns — gingham, quilt and cable knit — rendered in Hartmann&Forbes’ handwoven natural textiles.



LEMH500-21 Gold



LEMH500-87 Black

GINGHAM

This traditional gingham check is reimagined as a versatile neutral. Its simple, medium-scale motif is loomed of natural ramie fibers, creating subtle variations in each square that soften the geometric grid and highlight its handcrafted quality. The weft fibers are dyed to match the warp, infusing the two-tone pattern with graphic impact and visual dimension.



OLD STYLE ROMAN SHADE
LEMH500-87 Black
Woven-to-Size Grassweave



GRAIN SACK

Inspired by vintage grain sacks, this series elevates the humble carryall to a nostalgic, handcrafted design. The sturdy ramie weave is accented with slender stripes of red, white or blue against a denim or natural ground, evoking a quintessential Americana mood in a fresh format.



LEMH502-06 Natural

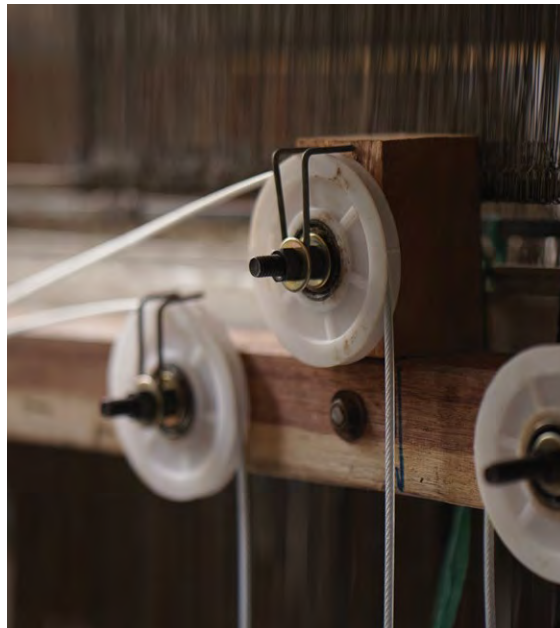


LEMH502-57 Denim



THE STORY OF JACQUARD HAND WEAVING

A classic weaving technique in which pattern and color are woven directly into the textile with a visible reverse pattern is known as jacquard. In 1801, Joseph Marie Jacquard invented the jacquard loom, simplifying the method for producing complex, consistent textiles. Offering a maximum width of 100 inches, the loom features an attachment of punch cards that correspond to textile patterns, controlling which warp threads are raised so the weft thread can be hand passed under them. By incorporating the use of a jacquard loom, we are realizing a broader range of looks, including the graphic and creative designs of the new Max Humphrey Collection.



CABLEKNIT

Reminiscent of iconic New England sweaters, this series is distinguished by its rich dimension rendered on a jacquard loom. A dense weave of refined ramie features alternating cable ribs framed in columns. They twist down planes of fabric, imparting visual depth and subtly raised texture in a design at once classic and contemporary.



LEMH503-15 Heathered Gray

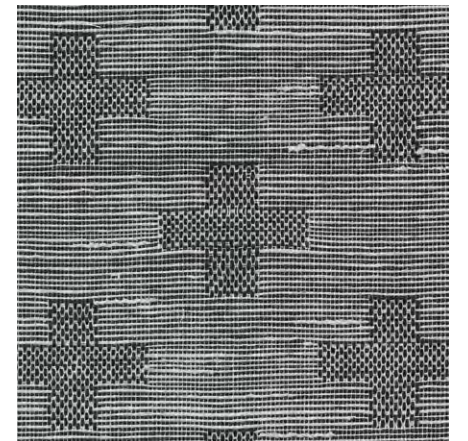


LEMH503-57 Heathered Blue



CROSS

An age-old symbol in nature and iconography, the venerable cross is reinterpreted in jacquard-loomed ramie. The crosses, formed of an intricate check pattern, float in a textural landscape delineated by horizontal lines, its tonal black and white palette producing a primitive, understated design.



LEMH501-84 Charcoal

QUILT

A modern take on traditional quilts, this series nods to the nostalgia of handmade crafts with its classic chain motif. The geometric pattern and two tonal colors provide a contemporary twist, while jacquard-loomed ramie creates subtle variations in the weave for rich texture and visual dimension.



LEMH504-18 Faded Khaki



LEMH504-57 Indigo



OLD STYLE ROMAN SHADE
LEMH504-57 Indigo
Woven-to-Size Grassweave



H&F STUDIO FRESH EDITS

SOOTHING NEW SERIES

Inspired by nature, a natural pairing is conceived. Two new series that evoke the senses with a calm serene feel to enhance health and wellbeing – Unity Papyrusweave [WTS] Windowcovering and Beachfront Handcrafted Wallcovering.

TIMELESS FAVORITES

From legacy natural fibers, the comfortable charm and historical patterns of the Tailored-to-Size Grassweave and Papyrusweave Collections are updated with additions to the Linen, Zen and Woolen Mill series.

PERFORMANCE FABRIC

A modern color update to privacy fabrics; designs from man-made fibers woven to achieve peak performance. The 7000 and 8000 series complete any look providing heat and glare reduction, UV filtration and privacy.



OLD STYLE ROMAN SHADE
PE608-03 Peaceful Dove
Woven-to-Size Grassweave

NATURAL WALLCOVERING
WL425-18 Bandon

UNITY WINDOWCOVERING

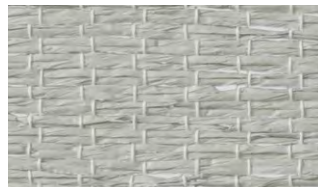
Loomed of gently twisted strands of papyrus, Unity's sumptuously soft texture is balanced by a double warp that delivers definition to the relaxed weave. The series features a diaphanous design that allows light to pass through, its airy look and peaceful color palette lending a zen sensibility.



PE608-03 Peaceful Dove



PE608-09 Common Ground



PE608-36 Gracious Grey

BEACHFRONT WALLCOVERING

At once relaxed and refined, this wallcovering captures its namesake coastal feel. Artisan-loomed of textural raffia, its hand-painted fibers reveal variable brushstrokes for a laid-back look. The colored warp combined with whitewashed weft fibers in an open weave, creating a dimensional, sun-dappled appearance.



WL425-18 Bandon



WL425-32 Seaside



WL425-36 Newport

TAILORED-TO-SIZE UPDATE

A refresh to our Grassweave and Papyrusweave Tailored-to-Size collections. A natural selection of new color options pre-woven and in-stock.



PERFORMANCE FABRIC UPDATE

Woven to achieve peak performance characteristics, Performance Rollershades are the perfect complement to our natural shade selection.





APM
AUTOMATION PROJECT MANAGEMENT

A CONCIERGE SERVICE FOR THE INTERIOR DESIGN COMMUNITY

As technology advances and becomes more and more complicated, we can help to simplify the process. Our Automation Specialists are available to collaborate with your team of architects, builders, installers and integrators to help you design, specify and manage your automated windowcovering projects to ensure successful specification and installation.

Schedule a meeting with an
 AUTOMATION SPECIALIST



LIVING GREEN

100 BEST GREEN WORKPLACES IN OREGON is an annual listing that showcases companies who possess exceptional sustainability policies. The notion of sustainability has widened to encompass social benefits as well as environmental protection, which for us includes our employees' well-being with the move to a new, upgraded, and larger facility last year.

We are incredibly proud of our
 #6 ranking this year.



SAMPLES ONLINE 24/7

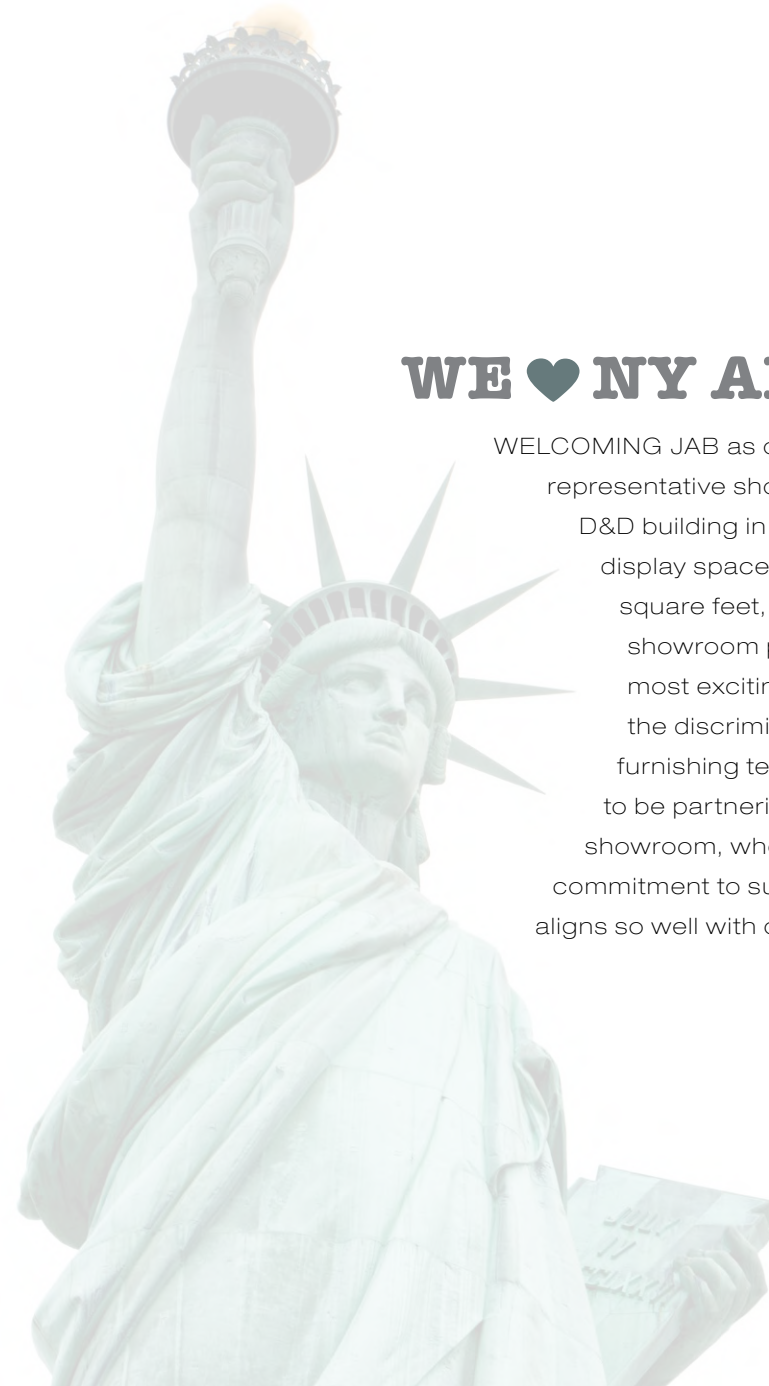
SEARCH THE SAMPLE LIBRARY by collection, color, texture and more to find the perfect natural textile for your next project. Samples ship same day if ordered by 12:00PST.

ORDER FALL UPDATE KITS at
hartmannforbes.com/sample-kits



WE ♥ NY AND JAB

WELCOMING JAB as our new representative showroom at the D&D building in NY City. With a display space of roughly 2600 square feet, their stylish NY showroom presents the most exciting trends from the discriminating world of furnishing textiles. We're excited to be partnering with this leading-showroom, whose values and commitment to sustainability aligns so well with ours.





NATURAL
WINDOWCOVERINGS,
WALLCOVERINGS
& TEXTILES,
HANDCRAFTED
FOR THE TRADE,
IN EDITIONS OF ONE



Printed with zero VOC/
low energy and UV inks

PO Box 1149 | Tualatin, OR 97062 | hartmannforbes.com
t 503.692.9313 | 888.582.8780 | f 503.692.9315

©2021 HARTMANN&FORBES, INC